



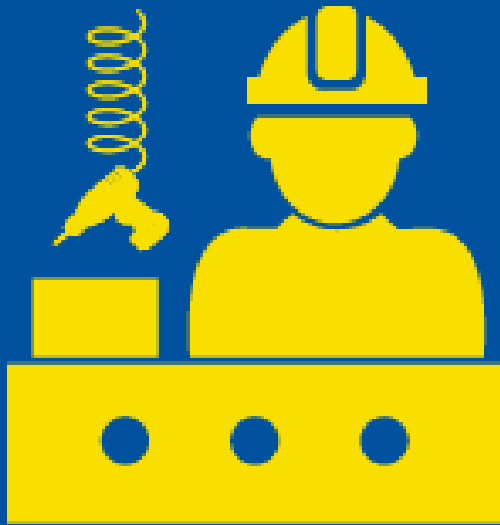
Assembly Management

HYDRA X
BUILD YOUR FACTORY SMART

WE CREATE SMART FACTORIES



Are your **assembly processes** transparent enough? ... and how flexibly can these processes be changed?



Motivation

"We run assembly processes **independently** of any **data collection**. Work instructions only exist on **paper**. Nowadays, we can only dream of an **integration** with our manufacturing IT."

"Our **product diversity** is killing us. Changes in mostly **programmed** assembly processes are **very costly** and, unfortunately, **error-prone**."

"We want a simple and flexible solution that also allows us to meet **just-in-time** and **just-in-sequence** (JIT / JIS) requirements."



Your Issue



- Map your assembly processes with an innovative software solution.
- Model workstations and worksteps simply by drag & drop.
- Support your operators with tailored instructions, pictures and videos directly at the workplace.
- Use process interlocking to ensure that only what is supposed to happen happens.



Our Solution

With the mApps of the HYDRA X category Assembly Management, you can ...

- ... model, control and monitor your diverse series production.
- ... map simple assembly processes digitally and collect data consequently.
- ... guide your workers through the assembly process systematically.
- ... connect intelligent peripherals (e.g. pick-by-light).
- ... make your assembly fit for the requirements of just-in-time and just-in-sequence.



HYDRA X



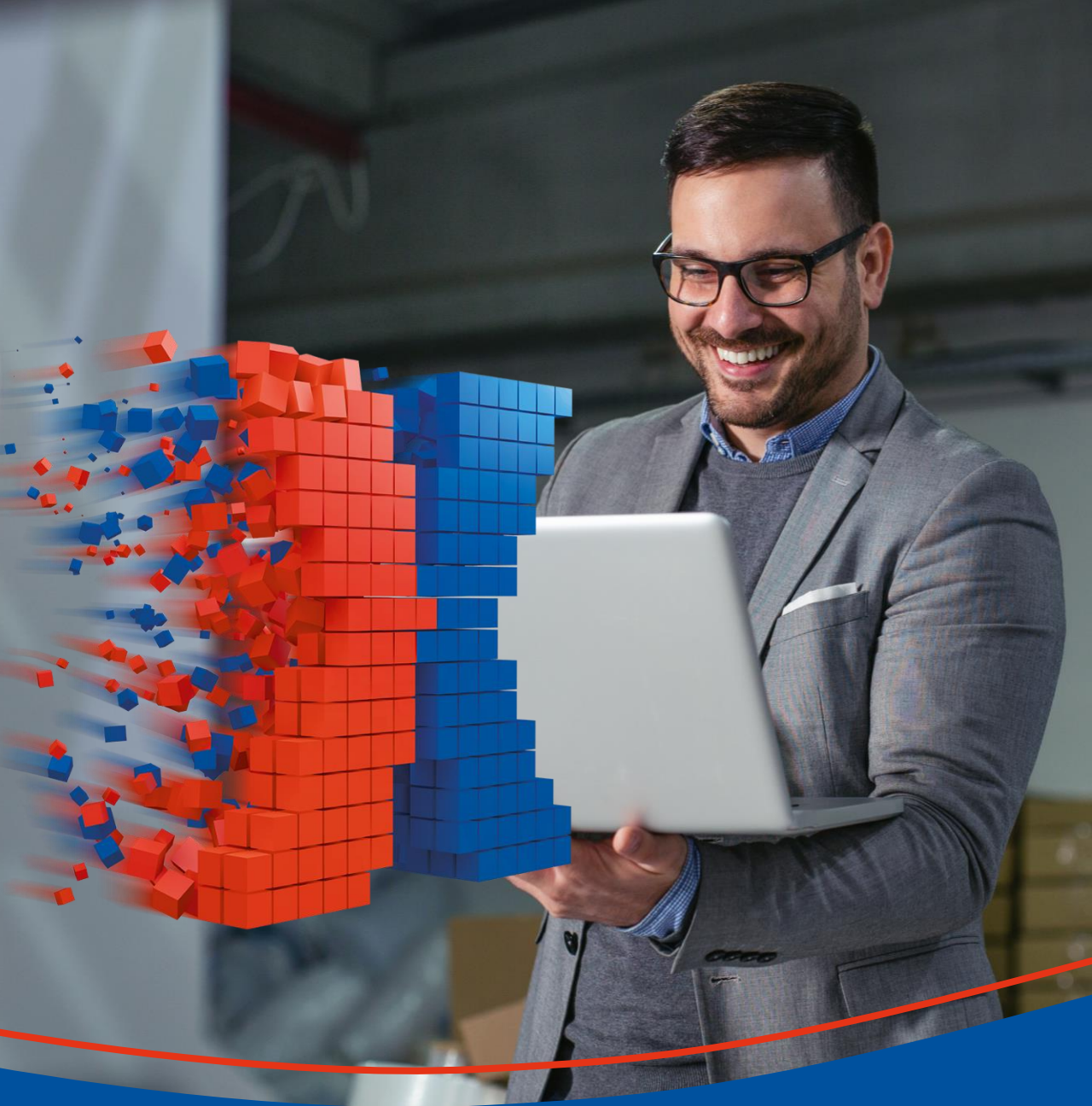
Assembly
Control

Operator
Guidance

Production
Process
Modeling

mAPPS

Assembly Management
mApps



Increase flexibility

Model processes instead of programming

Train employees quickly

Operator guidance as required

Ensure traceability

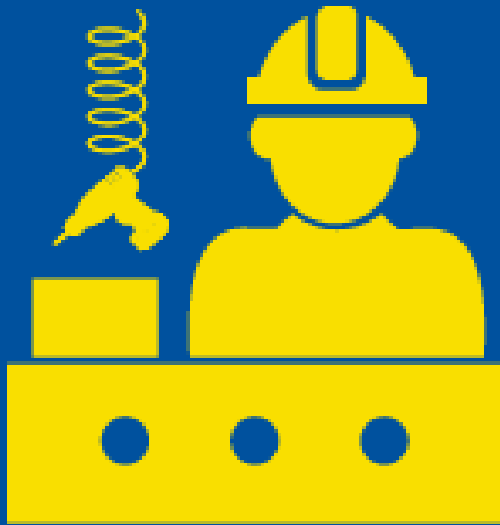
Document each work step separately

Full transparency

Keep yourself up-to-date at all times

Your Benefits

With **HYDRA X** Assembly Management,
you ensure transparency and flexibility
in your assembly processes.



Profit Now!

A photograph of a modern industrial building complex. The main building is white with blue accents and multiple windows. A smaller building with a blue roof and large glass facade is on the right. The sky is blue with white clouds. A red line graphic runs across the bottom of the image, ending in a white circle.

About MPDV

WE CREATE SMART FACTORIES





**Market
leader**

for IT solutions in production



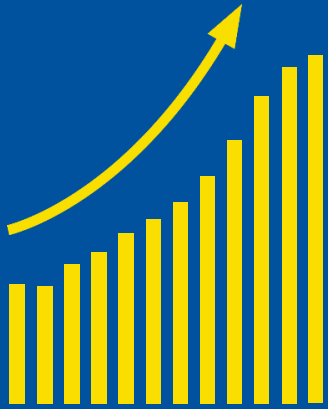
Over
45 years
project experience



We are at your side on the way to the Smart Factory

regardless of
your **size** and **industry**

Who are we?



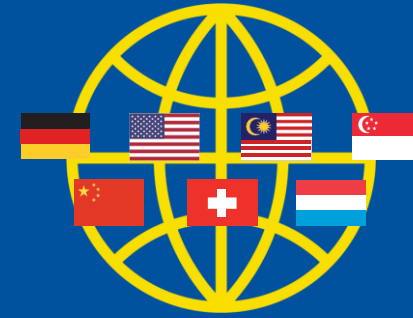
73 Mil

Euro group turnover



520

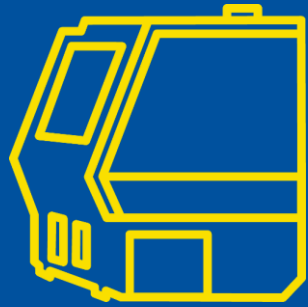
Employees



13

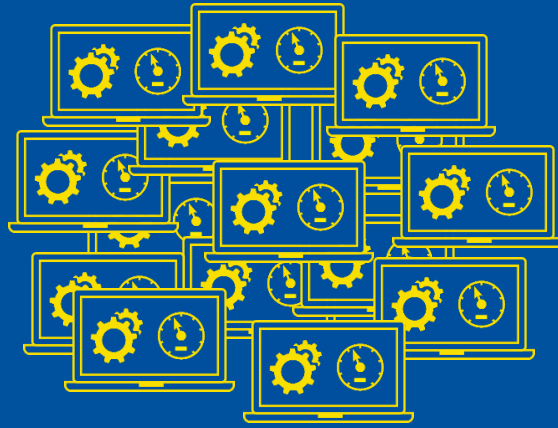
Locations worldwide

Basic Information



100,000

Machine connections
worldwide



1,100,000

People work with MPDV
systems every day



1,750

Installations

Basic Information

Would you like to find out more about HYDRA X?



WE CREATE SMART FACTORIES



www.mpdv.com



info@mpdv.com



[+49 6261 9209 101](tel:+4962619209101)



Contact